

WVARA Upcoming

Upcoming Meetings and Events

June 11	Clay Couger, N5YJZ	Common Mode Suppression
June 27-29	Field Day at Mora Hill !!!	
July & August	No evening meetings in July or August	
Aug 9	Summer BBQ at Baylands Park	
Sept 10	Dave Brown, WR6Z	All Things 900 MHz
Sept 20	Beach POTA Event!!!	
Oct 8	Vince Bafetti, KB6NTW	Loop on Ground Receiving Antennas
Oct 10-12	PACIFICON	

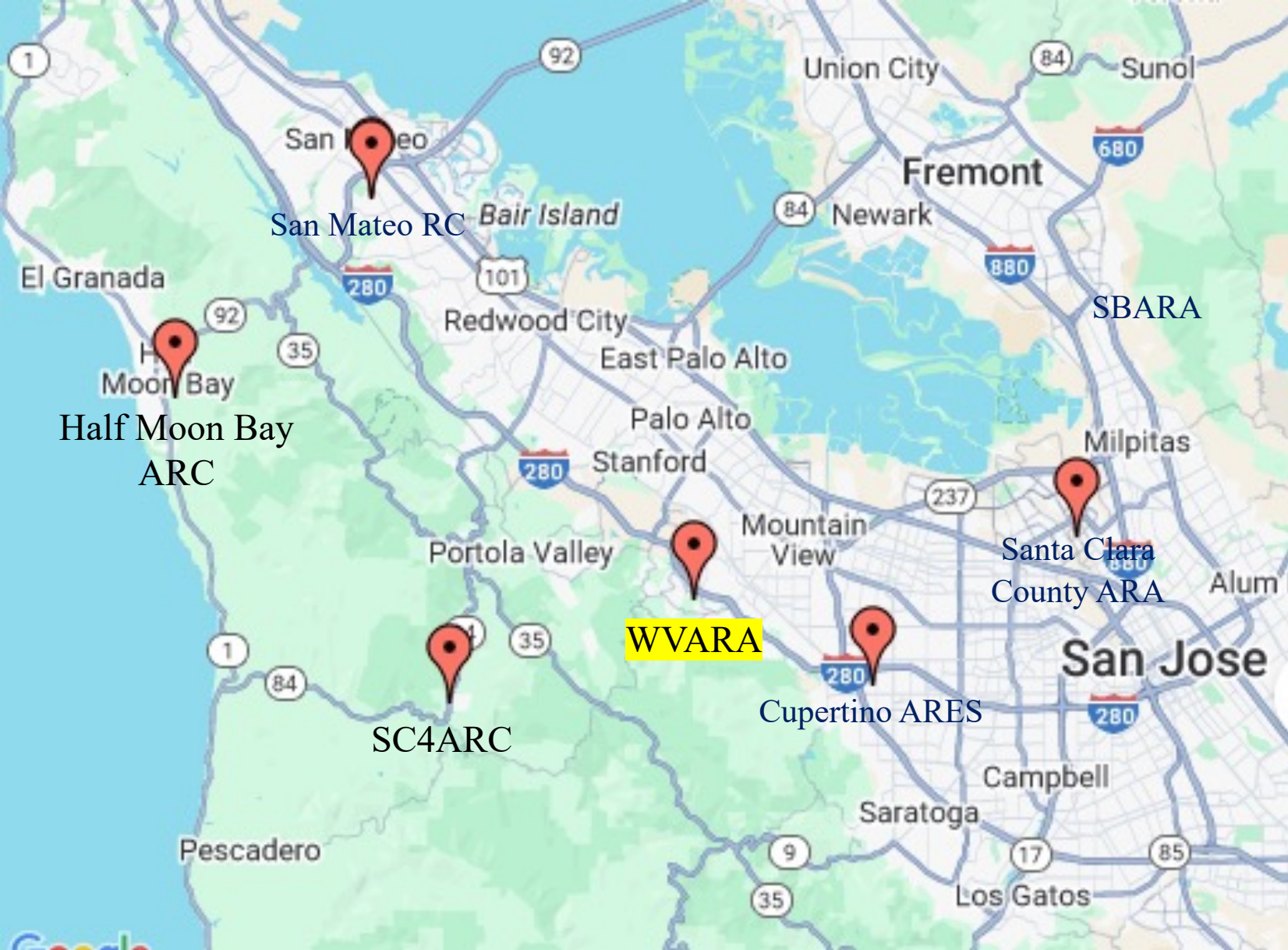


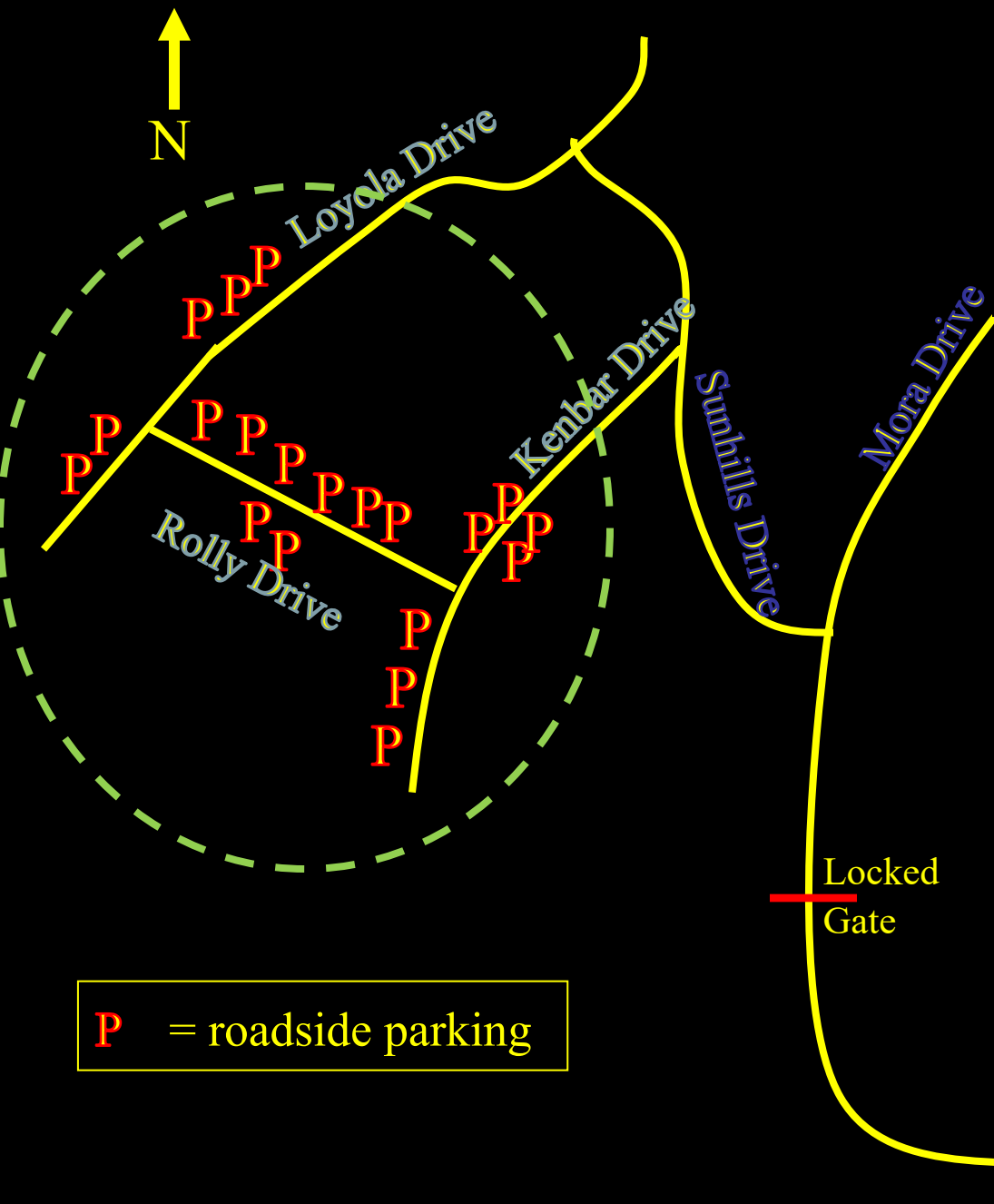
**Mora Hill in
Rancho San Antonio Open Space
Set up: June 27 @ 8am
Operations: 24 hours starting 11am June 28**

WVARA 2024 Field Day Team

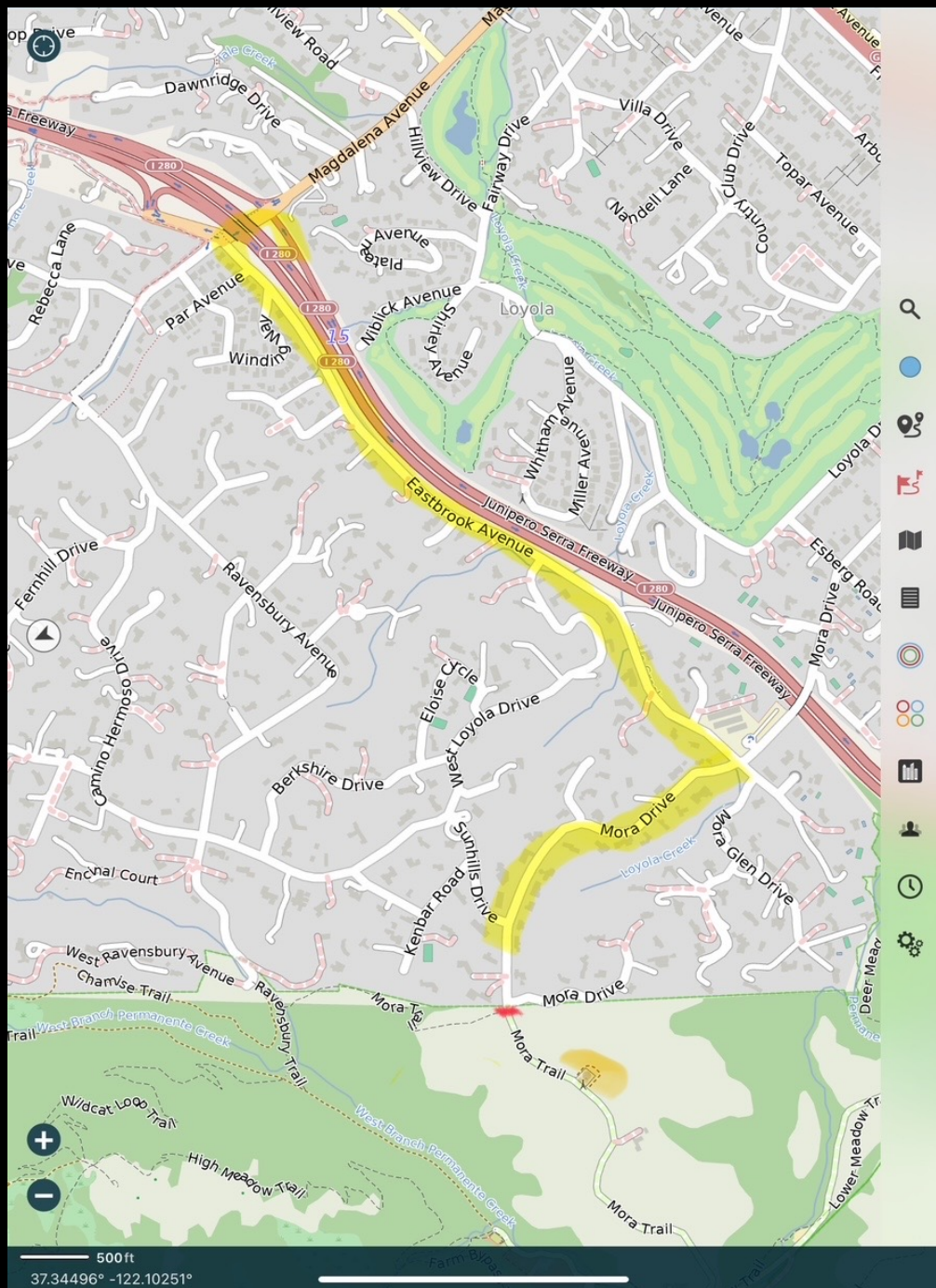


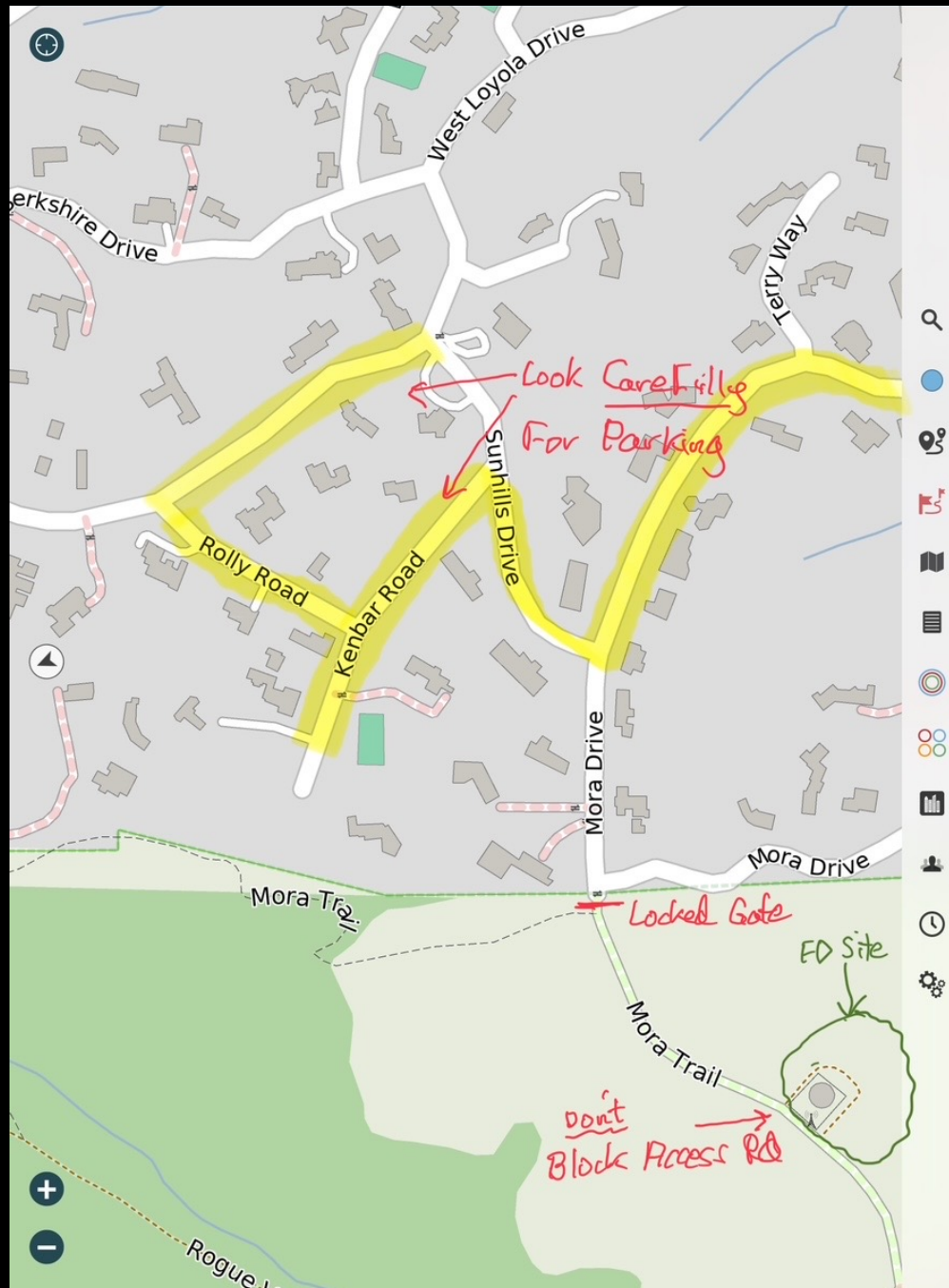
A map of the San Francisco Peninsula showing the locations of five research sites. The sites are marked with red pins and labeled: San Mateo RC (near San Mateo), Half Moon Bay ARC (near Half Moon Bay), SC4ARC (near Portola Valley), WVARA (near Mountain View, highlighted with a yellow box), and Cupertino ARES (near Cupertino). The map includes major highways (1, 92, 101, 280, 84, 880, 237, 17, 85) and cities (San Mateo, Redwood City, Palo Alto, Stanford, Mountain View, San Jose, Fremont, Newark, Union City, Sunol, Milpitas, Santa Clara, Alum Rock, Campbell, Saratoga, Los Gatos, Pescadero, El Granada, Moor Bay). The WVARA site is highlighted with a yellow box.





The Field Day site only has on-site space for 12 parked cars. The rest will need to park on nearby streets. Suggested locations are displayed.





Parking Hints

- Be careful out there: parking rules enforced!
- Avoid:
 - Built-up curbs
 - Driveways
 - Hydrants
 - Posted no parking
 - Dangers: rocks, cacti, stumps, logs, etc.
 - Dropoffs, ditches, drain grates and such
- Remember: it is (mostly) downhill leaving

7 Alpha Battery Transmitter List

- 3 CW stations
- 2 Digital stations
- 1 ½ SSB stations*
- 1 VHF station (free)
- 1 Satellite station (free)

* 2nd SSB station will support GOTA

GOTA Plan

- 2nd SSB station to double as GOTA station
- Kevin to provide station
- Brian Goldberg and Chuck to be GOTA coaches

SSB Antenna Plan

- 40ft pushup mast
 - 40/80 dipole up 40ft
 - Triband yagi (10/15/20) up 30ft

Digital Plan

- Bobby's van and tribander will be available
- 2 Digital stations instead of 3

VHF/UHF Plan

- Vince, Clay
- IC-705
- 2M / 440
- 6M Yagi ?
- ~20ft pushup mast (KN6FGH)





Towing Plan

Towing	Driver
WVARA's Tower Trailer	Clay (Bobby's van)
Solar Panel Trailer	Brian Davis
Porta Potty	Nick

Food Logistics

- Friday evening: Brian, Nick ?
- Saturday evening: Brian, Nick ?
- Saturday overnight coffee: Scott Emery,
AD6RY
- Sunday morning bagels, coffee: Kevin,
KK6VF

Bonus Points

- 7.3.1 Emergency Power - covered
- 7.3.2 ~~Media Publicity(100 pts)~~
- 7.3.3 Public Location (100 pts) - covered
- 7.3.4 Public Information Table and Materials - covered
- 7.3.5 Message Origination to Section Mgr **Tom**
- 7.3.6 Message Handling - **Tom**
- 7.3.7 Satellite QSO – **Mark**
- 7.3.8 Alternative Power (100pts) - covered ?
- 7.3.9 W1AW Bulletin (100pts) - **Clay**
- 7.3.10 ~~Tutorial Demo (100pts)–~~
- 7.3.11 ~~Site Visitation by elected official–~~
- 7.3.12 Site Visitation by served agency (100pts) - covered (visiting ranger)
- 7.3.13 GOTA Station / GOTA Coach - covered
- 7.3.14 Web Submittal (100pts) - covered
- 7.3.15 Field Day Youth Participation (max of 100pts) - **all**
- 7.3.16 ~~Social Media--~~
- 7.3.17 Safety Officer - covered ?

Know Thee The No's

- No open flames of any kind
- No parking on the hilltop on the access / fire road: keep it clear!
- No lines lower than ~14' over the access / fire road
- No loud noise / bright lights after dark

And, Finally ...

- Don't forget to bring fire extinguishers!!!
 - And shovel, fire blanket if you have them
- Bring safety marking tape - and use it
- Flashlight, headlamp (Porta Potty after dark)
- Water, tick / bug spray
- Foxtail and such are rampant and tenacious
- First Aid kit – bring personal
 - KN6FGH will bring some basics
- Keep it neat and clean-up – everybody!



Questions?